



Queen's Bench

Founded 1921

Queen's Bench Bar Association
of the San Francisco Bay Area

NEWSLETTER

January 2007

PRESIDENT'S MESSAGE

Enter Laughing...

by Felicia Vallera

My best friend and I have a somewhat peculiar New Year's Day tradition. Every year, despite the celebrations of the evening before, we go to a special two hour New Year's morning yoga class. It's really only about an hour and a half of our normal hatha yoga practice... but then we always close with a Sufi Laughing Meditation. Yes, a Laughing Meditation. For 20-30 minutes, about 40 yoga practitioners sit on their mats and just laugh. We giggle, chortle, and guffaw until there are tears streaming down our faces and we are rolling on the floor with aching stomachs. It is a delightful, healing, endorphin-generating beginning to the new year that reminds us to find joy and humor in even the most absurd and challenging moments of life.

Fulfilling the community service and member service missions of Queen's Bench requires hard work and is no laughing matter, but why not approach our mission with all the joy, optimism, and enthusiasm we can possibly muster? While Queen's Bench is primarily a professional organization, here to serve our community and give its members a helping hand with professional and career goals, Queen's Bench is also a place of refuge for many women and minority attorneys who have found the legal profession

continued, page 4



Meet The 2007 Queen's Bench Board Of Directors!

Rebecca Hooley, Director

Rebecca is a Deputy County Counsel for Contra Costa County. She handles matters related to land use, low-income housing and property assessment. Prior to joining the County Counsel's Office, she was a litigation associate at the firm of Bingham McCutchen. Rebecca received a J.D. from Columbia Law School in 2000 and a B.A. in Biochemistry and Molecular Biology from U.C. Santa Cruz in 1993. Rebecca joined Queen's Bench in 2004 and has been active as Co-Chair of the Scholarship Committee.



and her B.A. from U. C. Berkeley. She also obtained an M.S.W. from U. C. Berkeley. She has two grown children, a daughter who lives with her husband in Japan, and a son who teaches yoga in Thailand. She enjoys hiking, reading, cooking, music, and movies in her spare time. She joined Queen's Bench shortly after moving to the Bay Area in December 1997.

Hon. Adrienne Jacobs Miller, Director

Adrienne joined QB in 1978, the first year she started practicing law as a solo in San Francisco. She immediately enjoyed meeting all the members and became active on various committees when Wendy Nelder was President. In 1986 she was Vice President when Charlene Mitchell was President, and together they organized QB's 65th Anniversary, a memorable event. In 1987, she was President with Mary Wiss as Vice President and they had a successful



continued, page 2

Hon. Anne Beytin Torkington, Director

Anne has been an administrative law judge at the United States Department of Labor for the past eight years, hearing cases (as well as mediating them), in the areas of workers' compensation (under the Longshore and Harbor Workers' Compensation Act), and federal whistleblower (environmental, airline and commercial truck safety and Sarbanes-Oxley), as well as areas covered by approximately 60 other statutes. Before joining the Department of Labor she was an ALJ for the Social Security Administration and an administrative judge for the Equal Opportunity Commission. She got her J.D. from UCLA School of Law,



INSIDE THIS ISSUE

QB New Members.....	3
Juvenile Hall Project Schedule	4
2006 LEAADD Dinner	5
Announcements	6
Past Presidents Dinner	7
Past President Annual Merit Awards	8
Calendar	10

QB Board of Directors

Continued from page 1

year of programs and growth. In 1992, after 14 years of lawyering, being a San Francisco Rent Board Hearing Officer and a Family Law Settlement Judge, Adrienne was appointed to the Superior Court as a Juvenile Hearing Officer. Throughout her career she has met wonderful colleagues in Queen's Bench and calls many of them close friends. Through QB Adrienne had the honor of meeting Mildred Levin and is proud to work on the Scholarship Committee with the Hon. Ina Gyemant, Anne Gyemant Paris and Rebecca Hooley. As a member of the 2004, 2005, and 2006 QB Board she has enjoyed renewing her friendship with Catherine Duggan and all the great new young leaders of QB.

Sophie Froelich, Director

Sophie is a litigation associate in the San Francisco office of Nossaman, Guthner, Knox & Elliott. Prior to joining Nossaman, Sophie clerked for a federal district court judge, then practiced products liability law for three years. Currently, Sophie's practice focuses on general commercial litigation and water law. She obtained her J.D. from the New York University School of Law in 1999 and her B.A. from Columbia University in 1994.



Anne Gyemant Paris, Director

Anne is the Legal Services Coordinator at La Casa de las Madres, which provides shelter, advocacy and support to battered women and their children. She graduated from Hastings College of the Law, part of three generations of women lawyers in her family. After law school, she was appointed to a federal government position as a Presidential Management Intern, a fellowship program designed to create leaders in public service. Most recently, Anne was San Francisco director of Break the Cycle. She lives in San Francisco with her husband Michael and her daughter Sophia, and she has been involved with Queen's Bench for as long as she can remember.



Lisa K. Rauch, Director

Lisa is a Past President of Queen's Bench (2002) and is currently the First Vice President for California Women Lawyers. She practices civil litigation, focusing on product liability. She has two young daughters and lives in San Francisco.

Joanna D. Frazier Immediate Past President

Joanna is the Assistant General Counsel of Sheppard Mullin. She handles risk management, conflict of interest and ethics issues for her firm. Prior to joining Shep-



pard Mullin, Joanna was a litigation associate at the law firm of Hinshaw & Culbertson. She has been a member of Queen's Bench since 1996. Joanna enjoys cooking, reading, and spending time with her husband, Kyle, and their daughter, Scarlett.

Elizabeth D. ("BX") Long, Assistant Secretary/Treasurer

BX Long is a sole practitioner handling exclusively family law matters, most often dissolution of marriage or domestic partnership and child custody matters. She has been running her own practice since the end of 2001. She received her JD from the University of Minnesota Law School and her BA from Cornell University. The last job BX had before moving to San Francisco was as a bus driver with the Metropolitan Transit Commission in Minneapolis/St. Paul.



Amee A. Mikacich, Secretary

Amee is a partner at the firm of Filice Brown Eassa & McLeod, LLP in Oakland, California. Her practice includes general litigation and trial work, with emphasis in the areas of product and premises liability, toxic tort, employment law, and public entity defense. Amee has been a member of Queen's Bench since 1997 and is serving in her third year as a member of the Board of Directors.



Elizabeth C. Saviano, Treasurer

Elizabeth received her B.S.N. in 1977 from the University of Michigan, School of Nursing and her M.S.N. from the University of California, San Francisco School of Nursing in 1982. She obtained her J.D. degree from the University of San Francisco School of Law in 1995 and was admitted to the California bar that same year. She is a licensed registered nurse and nationally certified Women's Health Nurse Practitioner.



Barbara Harris Chiang, Second Vice President

Barb is a litigator whose practice focuses on sex, age, race and disability discrimination cases, sexual harassment, and wrongful discharge/breach of contract claims. She practices at the law firm of Dillingham & Murphy, LLP. Barb graduated from Southwest Missouri State University (now Missouri State University) and obtained her J.D. from the University of Missouri-Kansas City, School of Law in 1997. Barb enjoys spending free time with her husband Bill, her daughter Mia and her son, Carson.



continued, page 3

QB Board of Directors

Continued from page 1

Kelly Robbins, First Vice President

Kelly, a California State Bar Certified Family Law Specialist, currently runs her own family law practice in San Francisco. She has been practicing family law in San Francisco since 1996. Kelly graduated from the University of San Francisco School of Law in 1991 and began her career in civil litigation. She enjoys playing with her 6 year old daughter, and also enjoys horseback riding and reading.



Felicia Vallera, President

Felicia is owner/principal of The Law Office of Felicia Vallera, a business law strategy and transactional boutique for entrepreneurs and growth-stage businesses. A frequent speaker and author on the topics of business acquisitions, business reorganizations, corporate governance, and legal strategies for startups, she takes special pleasure in working with women-owned private business clients whenever possible. Felicia also performs teaching, counseling, and other pro bono work in the San Francisco small business and nonprofit community, primarily through the United States Small Business Administration, the Renaissance Entrepreneurship Center, and the National Association of Women Business owners. She served as President of the Barristers Club in 2005, as a member of the BASF Executive Committee in 2004 and 2005, as an *ex officio* member of the BASF Board of Directors in 2004 and 2005, on the BASF Audit Committee in 2005, and is currently on the Executive Committee of the BASF Business Law Section.



Felicia earned her B.A. in Economics with honors from the University of California in 1978. She started her career as a CPA with Peat Marwick Mitchell & Co. (now KPMG) in Los Angeles, where she was voted into the management group in 1983. In 1985 she was hired away by a client, First Interstate Bancorp, as Controller of their \$200 million multi-state Information Services Corporation, then three years later promoted to Vice President for bank-wide mergers and acquisitions, product re-engineering, and other strategic projects. First Interstate awarded Felicia a full scholarship to the Graduate School of Business at the University of Southern California, where she attended classes nights and weekends to earn an MBA in Decision Support and Strategic Planning, and then went on to post-graduate studies in corporate crisis management under some of the leading experts in the nation. As a result, she was recruited to join the McDonnell Douglas Corporation turnaround team in 1992, as the youngest division director (and one of only two women executive officers) in McDonnell Douglas Corporation at the time.

After successfully serving as team leader on the \$2.3 billion outsourcing of the MDC Information Services Group to IBM in a groundbreaking series of transactions that was reported on the front page of the Wall Street Journal, she took a three-year sabbatical to attend law school.

Felicia moved to San Francisco in 1995, and graduated from Hastings College of the Law in 1998. During law school she served as Managing Editor of the Hastings International and Comparative Law Review and worked as a legal intern with the United States Securities and Exchange Commission. Her early years as an attorney were spent in the transactional practice of Lillick & Charles, LLP handling corporate, securities, secured financing, and institutional real estate matters. She has been an active volunteer in Queen's Bench since she launched her current independent law practice in 2001, serving as a past member of the Business Development Committee, Co-Chair of the Education Committee, Co-Chair of the Mentorship Committee, Assistant Secretary/Treasurer and Newsletter Editor, Corporate Secretary, and most recently as First Vice President and Programs Chair.

Queen's Bench New Members

Please welcome the following new members who joined between October 28, 2006 and January 9, 2007:

- Hillary Baker
Student, UC Hastings
- Sasha Cummings
Lewis Brisbois Bisgaard & Smith
- Linda Foy
Nemerovski, Canady, Falk, Rabkin
- Sandra K. Hilton
Kaye Moser
- Nan E. Joesten
Farella Braun & Martel LLP
- Kathleen E. Letourneau
- Suizi O. Lin
Furtada Jaspovice & Simons
- Carrie Moulton
Hallisey and Johnson
- Patricia Smith Ramsey
- Heather R. Stoneman
Jewel & Stoneman LLP
- Maureen Terheyden
- Celia Van Gorder
Howard Rice Nemerovski Canady Falk & Rabkin
- Heather Zona

Queen's Bench Juvenile Hall Project 2007 Schedule of Crafts Nights

Dates	Activities	Dates	Activities
1/3	Crayon drawings; New Years resolutions	8/1	Writing story with illustrations
1/17	Draw a wishing tree	8/15	Modeling with clay
2/7	Valentine's Day party; decorate boxes and cards	9/5	Centerpieces for President's Dinner *
2/21	Decorate t-shirts	9/19	Beaded bracelets
3/7	Beaded bracelets	10/3	Mexican yarn figures
3/21	Drawings with Saint Patrick's day theme	10/17	Face mask decoration; Halloween party
4/4	Make decoupage boxes	11/7	Decorate canvas tote bags
4/18	Drawings with spring party theme	11/21	Thanksgiving theme crafts
5/2	Make Mother's Day cards and decorate boxes	12/5	Holiday cards and ornaments
5/16	Centerpieces for Judges' Dinner *	12/10	Date subject to change — gift wrapping party
6/6	Make cards for the "male in your life"	12/19	Christmas ornaments and holiday party
6/20	Decorate canvas tote bags		
7/4	Worry dolls and Fourth of July theme party		
7/18	Dream catchers		



* subject to actual dates of dinners

President's Message

Continued from page 1

to be a rather unwelcoming place. It is our capacity for working side by side in an environment of kindness, tolerance, and laughter that has always made us strong and special. This is why Queen's Bench has survived for over 85 years, to become the oldest continuously-operating women's bar association in the United States.

We find ourselves in the midst of a very subtle sea change at the beginning of 2007. The legal career paths, working styles, and work/life balance choices of our Queen's Bench members are becoming increasingly diverse as we succeed at reaching new membership markets and helping our members find alternative career paths in the law. Our new leadership team is a microcosm that illustrates this, as we start the new year with a Board of Directors that includes, among other things, a corporate strategist/dealmaker attorney president who has never set foot in a courtroom, five board members who are non-litigators, five women who are running their own very active and dynamic businesses, four women who have dedicated their careers to public and community service, and four working mothers of young children. This widening range of profiles throughout our membership presents us with many exciting opportunities, but brings interesting challenges as well.

I believe it is essential that Queen's Bench be a role model for tolerance, inclusion, and diversity within our own organization if we wish to successfully advocate for tolerance, inclusion, and diversity in the legal profession.

I'm confident that we are up to the challenge. By positively leveraging the benefits of our diversity and finding new methods of empowering our volunteers to overcome style, schedule, career-choice and life-choice differences, yes, we CAN expand service to our community through both traditional programs and new community alliances... yes, we CAN creatively and strategically deliver important member services like business networking events, education, and mentoring to support the retention of women in the profession... and yes, we CAN continue to enhance our organizational infrastructure to support more membership growth... all in a fun, inclusive, and tolerant environment. 2007 will therefore be a year of both honoring precious tradition and creatively and open-mindedly exploring new methods to deliver mission-critical services in our changing environment.

We start 2007 with grateful acknowledgement to Past President Joanna Frazier and all of the officers and directors of 2006 for exiting on a terrific upward trend for Queen's Bench membership and program activities. Now the responsibility has passed to new shoulders. I am delighted to introduce our new Board of Directors to you in a separate article in this newsletter. This leadership team is a big part of the reason why I am so happy and excited that in January your new Board of Directors will be kicking off the 2007 Queen's Bench year with a strategic planning retreat, to seriously examine how we are fulfilling the Queen's Bench mission, and set community and member service goals for the new year.

And we might even do a little laughing...

2006 LEAADD Dinner

by Katie Burke, Co-chair, Business Development Committee

Are we ready for a female President? On September 27th, I heard that not only are women ready ... but that, more importantly, we were born that way.

The 2006 LEAADD Dinner featured lively remarks by our brilliant speaker, Cristina Uribe, who impelled her audience to imagine that one or more among us could one day deliver the Inaugural Address. Cristina, the West Coast Political Opportunity Program Director of EMILY's List, offered us timely and inspirational wisdom. In her response to the thematic question of the evening, Cristina predicted that our celebration of a female President will come to life far sooner than we may imagine. All it takes, she implored, is for us to believe it and achieve it.

For those who are not familiar with the LEAADD Dinner, this annual event has traditionally been a networking and social soiree for female lawyers, engineers, architects, accountants, doctors, and dentists. However, we have grown the numbers and broadened the definition of our LEAADD community substantially in recent years, such that the crowd at LEAADD events is now peppered with real estate brokers, members of various finance fields, and building industry professionals, to name a few of our most recently welcomed groups.

Approximately 145 sensationally accomplished women were present at the 2006 LEAADD Dinner. This year's event took place at the Far East Café in San Francisco, and we held our usual on-site cocktail hour to kick things off. LEAADD committee members affixed a sticker, bearing the name of a famous Chinese or Chinese-American individual, to the back of each guest as she arrived. What this meant for me was that, for just one night, I was Michelle Kwan, Olympic figure skater extraordinaire. The bragging rights were fabulous, and I did not miss one opportunity.

I was not alone in my moment of glory. Other attendees played the roles of Buddha, Shaolin Monk, Jackie Chan, Yao Ming, Mao Zedong, Yo-Yo Ma, Lucy Liu, Amy Tan, Ang Lee, Connie Chung, Zhang Ziyi, Bruce Lee, and Mulan. And yes, I was forced to share the spotlight with other Michelle Kwans. The nametags were a component of an icebreaking game, by which each participant was to discover whose identity she had inherited for the evening, based on the



Yes, we're ready for a female President. Are you just asking the question, or are you ready to campaign?

clues that other attendees gave her upon reading the sticker on her back. Unbeknownst to our guests, everyone would ultimately be seated at a table designated for her particular celebrity namesake.

When it came time to seat our group for dinner, LEAADD committee member Virginia Sung assisted me with the educational piece of the icebreaker, by providing trivia regarding each of our chosen celebrities as the celebrity's particular table was introduced.

Those who cheered the loudest when their table name was called won gifts that had been donated to our event in advance. Shawna Swanson, my LEAADD co-chair, then introduced Cristina, the affirming speaker who empowered us with hope and vision.

Shawna joins me in wholeheartedly thanking the generous management and staff of the Far East Café, all of whom took excellent care of our guests and ensured that food was never short in supply. We also thank George Verlaine, the photographer who took many wonderful photographs at the event, including those accompanying this article.

We offer special thanks to Maurine Killough, Queen's Bench Administrator, and to our active committee members: Virginia Sung, Lisa Freitas, Eileen Manning-Villar, Kristen Pezone, Annie O'Donnell, Carol Solfanelli, Mary Bosworth, and Alice Anderson. The collective spirit of this year's planning committee was enthusiastic, and the planning process was characterized by dedicated and intelligent work. Each member's contributions were critical to the evening's success.

Many thanks to our sponsors, who donated the following gifts: Nordstrom Spa, a \$100 gift certificate; Darioush Winery, a wine tasting and tour for four; diPietro Todd Salon, a hair cut and style; Café Tiramisu, a \$100 gift certificate; AG Ferraro, a gift basket, their third contribution to LEAADD; Man U Imports Treasures of China, a traditional Chinese wedding basket, their second contribution to LEAADD; Axiom Legal, the desserts that we ate at the dinner; LEAADD committee member Virginia Sung, the fortune cookies that each contained one LEAADD



From left to right: LEAADD speaker Cristina Uribe, Queen's Bench Administrator Maurine Killough, and LEAADD co-chairs Katie Burke and Shawna Swanson.

continued, page 6

ANNOUNCEMENTS ...

Panel Discussion on California High School Exit Exam

On Thursday, January 25, 2007 from 7:00-9:00 p.m., John F. Kennedy University School of Law and Legal Studies Program will present a panel discussion entitled: The California High School Exit Exam: Is It a Constitutional Method of Promoting Student Achievement? The event will be held at 100 Ellinwood Way, Pleasant Hill, California. Childcare will be provided with advance reservation only. RSVP to som@jfku.edu or (925) 969-3332.

Note From The Editor

Thank you to all of the many contributors to the 2006 newsletter. Your assistance has been invaluable during the past year. Please welcome our 2007 Newsletter Editor: BX Long. Best of luck, BX!
— Amee Mikacich
2006 Newsletter Editor



QUEEN'S BENCH NEWSLETTER

Published monthly by the Queen's Bench Bar Association of the San Francisco Bay Area, a California nonprofit corporation

NEWSLETTER EDITOR: Amee A. Mikacich

ADMINISTRATIVE OFFICE:
816 E. Fourth Avenue
San Mateo, CA 94401-3317
Telephone: 415-249-9280
Facsimile: 650-344-1588
E-mail: QueensBench@rcn.com
Internet: www.queensbench.org

ADMINISTRATOR: Maurine Killough

2007 OFFICERS

FELICIA VALLERA President
KELLY ROBBINS First Vice President
BARBARA L. HARRIS CHIANG Second Vice President
AMEE A. MIKACICH Secretary
ELIZABETH SAVIANO Treasurer
ELIZABETH D. "BX" LONG Asst. Secretary/Treasurer
JOANNA FRAZIER Immediate Past President

2007 DIRECTORS

SOPHIE FROELICH
REBECCA HOOLEY
HON. ADRIENNE JACOBS MILLER
ANNE GYEMANT PARIS
LISA K. RAUCH
HON. ANNE TORKINGTON

QB Seeks 2007 Committee Chairs

One of the very best ways to get better acquainted with fellow Queen's Bench members and more involved in serving our community is to become active on a Queen's Bench committee. Our committees work as teams in a fun and collegial environment to carry out selected portions of the Queen's Bench mission and goals. Committee chairs are appointed in January of each year for annual terms, and a few chair positions remain open at the date of this newsletter publication. If you are interested in learning more, please contact Queen's Bench President Felicia Vallera at (415) 291-9580, or felicia@vallerlaw.org, before Friday January 12.

Queen's Bench Receives Gift

The Queen's Bench Bar Association is the recipient of a wonderful gift from the estate of former Queen's Bench member Elvera Wollitz Smith. We would like to express our heartfelt thanks to the Wollitz Smith estate and family for their generosity and kindness.

2006 LEAADD Dinner

Continued from page 5

member's contact information; and Burke Family Law, my firm, a \$300 gift certificate to the Apple Store.

And finally, thank you to Nancy Pelosi, for putting a fine point on Cristina's words, by recently securing the first Speaker of the House seat occupied by a woman. You are rapidly running the path that leads to fulfillment of our thematically expressed hope for a female President.

We truly appreciate the community that has evolved over the years, and we look forward to witnessing its ongoing expansion. Please join us, and invite the vibrant, professional women in your respective non-LEAADD communities, at our first 2007 happy hour. The date and other details of the event are forthcoming.

In the meantime, we wish you a wonderful holiday season, and we thank you for your participation in our committee. We will see you next year!



Felicia Vallera, getting her game on!

Past Presidents Dinner 2006 a Great Success

By Rebecca Hooley, Queen's Bench Board of Directors

Queen's Bench paid tribute to its past presidents at the annual Past Presidents dinner on November 13. The past presidents of Queen's Bench are leaders of the Bay Area legal community, including many judges, mediators and arbitrators, teachers, managing partners and women who have forged independent career paths. In celebrating the accomplishments of the past presidents, newer members are presented a wonderful opportunity to share in the stories and advice of these remarkable women.

This year's dinner was held at the elegant City Club. The evening began with a wine reception, and as the guests mingled, past presidents could be easily spotted by the stylish hats they sport to denote their special place in the history of Queen's Bench. Amid the conviviality, guests bid on many unique and valuable items at a silent auction and participated in a raffle for jewelry, flowers, and gift certificates. The proceeds of these fundraising activities benefit the Queen's Bench Foundation, a 501(c)(3) charitable organization that funds the Juvenile Hall Project and other important community services.

As the wine reception ended, dinner was served at candlelit tables accented with centerpieces of hats decorated with autumn leaves, which were made for the event by the girls of the Queen's Bench Juvenile Hall Project.

During dessert the most eagerly awaited event of the evening began — the live auction. This year the attendees were treated to the auctioneering talent of Catherine Duggan, the Hon. Ruth Astle, the Hon. Lee D. Baxter, and the Hon. Ina Levin Gyemant. The highlight of auction was a spirited bidding war for a lovely original drawing by Senator Dianne Feinstein entitled "Pink Orchids," obtained for Queen's Bench through the efforts of Past President Angela Bradstreet. After many rounds of bidding, Patricia Bovan-Campbell, co-chair of the Juvenile Hall Project, made the winning bid for the beautiful piece. The auction and raffle raised almost \$3,000 for the Queen's Bench Juvenile Hall Project and other nonprofit causes. Many thanks to all of the following for their contribution of auction and raffle items:



Hon. Charlene Padovani Mitchell and Hon. Lee Baxter, Ret.

- Senator Dianne Feinstein — Original Drawing entitled "Pink Orchids"
- Hon. Lee D. Baxter — Original Matted Photographic Artwork
- Dillingham & Murphy — Bouquet of Fresh Flowers from Posies Perfect
- Robbins Family Law — Four San Francisco 49ers Tickets
- Filice Brown Eassa & McLeod — Two Oakland Raiders Tickets
- Cohn-Stone Studios — Original Hand Blown Glass Pumpkin
- Fenwick & West, LLP — One Bottle Opus One 2002
- Sonnenschein Nath & Rosenthal LLP — Two Tickets to Beach Blanket Babylon
- San Francisco Giants — Four Club Level Tickets for the 2007 Season
- Hon. Anne Beytin Torkington — Gift Card to Vino Venue
- La Belle Day Spa — Beauty Package
- Hon. Ruth S. Astle — Two Tickets to ACT "The Circle"
- Law Offices of Felicia Vallera — Original Carnelian and Gold Vermeil Necklace
- Catherine Duggan — Two Tickets to the San Francisco Ballet "Don Quixote"
- Linda Schieber — Two Sets of Original Beaded Jewelry

For Past President Merit Award speeches, see pages 8-9

continued, page 9



Attendees enjoy the reception.



Past Presidents enjoy the party.



Live auction with Hon. Ina Levin Gyemant, Ret.

Past President Annual Merit Awardees

Annual Merit Awards were presented on November 13 at the Past Presidents Dinner to Eliza Rodrigues and Maria Schopp. Reprinted below are speeches by Jill Schlichtman and Hon. Ruth S. Astle, honoring Eliza and Maria, respectively.

Eliza Rodrigues

by Jill Schlichtman

Tonight Queen's Bench will bestow its Annual Merit Award on one of our Past Presidents, Eliza Rodrigues. Eliza could not be with us tonight, as she is enjoying herself thoroughly at a Barbara Streisand concert. However, I am thrilled to describe for you many of Eliza's accomplishments, and why she is so deserving of this honor.



Eliza's family background is one of those "pull yourself up by the bootstraps" American success stories. She is a first generation American. Both parents were born on Madeira Island, in Portugal. Eliza's mom obtained a high school diploma, but her father was only educated to the 7th grade. From these humble roots, however, Eliza's two older brothers emerged - one with a JD and the other with a master's degree. Her younger sister has four children and one grandchild and is now also working on a college degree.

Eliza was born and raised in Hayward, California. She attended UC Berkeley as an undergraduate and then received her law degree from the USF School of Law.

Eliza is an avid Oakland Raiders fan (it's been a long season) as well as a Cal Bears fan. She also enjoys skiing, traveling, reading and spending time with family including her nine nieces and nephews and her great-niece.

One of Eliza's first law jobs was as a law clerk at the Legal Aid Society of SF's Employment Law Center. She later spent time at the well-respected firms of Kincaid, Gianunzio, Caudle & Hubert, Long & Levit, Tilly & Graves, and Brobeck, Phleger & Harrison, before joining Stoel, Rives in 2002 where she practices in the firm's litigation and environmental groups.

Eliza is an experienced trial lawyer and practices in the areas of product liability and premises liability. She has experience litigating both class and multi-district litigation and professional liability disputes. She has handled many mass tort cases representing dozens of claimants joined in single lawsuits. She also counsels on a variety of issues, including litigation avoidance, minimizing liability exposure and product recalls.

continued, page 9

What I Know About Maria

by Hon. Ruth Astle

First I would like to read a list of past recipients of our Queen's Bench Merit Award.

We are giving a second Queen's Bench Merit Award to another Past President. Her dedication and loyalty to the Juvenile Hall Project has been breathtaking. She was one of the first to recognize the girl's work as art.



She did her undergraduate work at UC Berkeley in Legal Studies, demonstrating early her dedication to the law.

She went to law school on the east coast, attending the New York School of Law in 1995. She wanted to serve justice and defend the legal system by making sure that everyone had a fair trial.

She worked as a public defender in Miami and Philadelphia.

She came back to California in the late 1990s and began practicing criminal defense. She became interested in family law while volunteering with the BASF Volunteer Legal Services Program where she represented low income parents. Her practice in family law focuses on mediation and collaborative law processes to obtain satisfying solutions for her family law clients.

She has volunteered for the QB/GGU career day at least three times, talking to law students about her career path.

She is a tireless supporter of QB. She is presently on the Legislative Committee. She is a big supporter of the Juvenile Hall Project and recruits for the project every chance she gets. She gave up being co-chair of the juvenile hall committee while she was president, but still talks about it whenever someone will listen. Even at the LEAADD dinner she promoted the project. She organized an art show to raise money for the project. She combines her passion for justice, fairness and families by bringing arts and crafts to incarcerated young women. She is an artist and crafter in her own right. She is a wonderful role model for the girls and for Past Presidents. I am sure she has figured it out by now — Maria Schopp deserves

continued, page 9

Eliza Rodrigues

Continued from page 8

Eliza is a member of the Stoel Rives Diversity Committee which works to recruit develop and retain diverse attorneys and staff and to promote diversity within the firm. She also serves as the pro bono coordinator for the Stoel Rives SF office.

Eliza has acted as a Judge Pro Tem in San Francisco and Alameda Counties, she is a member of the Bar Association of San Francisco Board of Directors, as well as the BASF No Glass Ceiling Initiative Monitoring Committee and has served on the BASF Judiciary and Nominating Committees. She has also served as the District One Governor for California Women Lawyers. These are just a sampling of the numerous professional committees with which she has been involved over the course of her career. She has also written professional articles and been a speaker on numerous distinguished panels.

And of course, as we all know, Eliza has served as a member of the QB Board of Directors and ultimately as our president in 2003. It is not always the case that our past presidents remain active beyond attending this dinner or the Judge's Dinner. Such is not the case with Eliza. She has maintained an important presence within QB, which is why we are honoring her tonight.

Eliza has served as this year's Nominating Committee Chair, and the committee has just published its impressive list of nominations. In addition, for the past two years, she has co-chaired the Juvenile Hall Committee with Patricia Bovan-Campbell. As most of you know, QB has for many years run a program at the Youth Guidance Center for the girls housed there. Our volunteers provide companionship, conversation, varied activities and informal mentoring. They meet the first and third Wednesday of each month from 7:00 to 9:00 p.m. Eliza volunteers a significant amount of her time and pays for a significant amount of the Project's expenses out of her own pocket. She has been instrumental in rallying lawyers, law students and their friends and family to participate in this very worthwhile venture.

So, for Eliza's continued commitment to Queen's Bench, in addition to all she does for the legal community and in her personal and professional life, we honor her tonight by awarding her the Queen's Bench 2006 Annual Merit Award.

I would like to ask Eliza's niece, Lanelle Rodrigues to please come forward to accept the award on her behalf.

Re-printed with permission from Jill Schlichtman

Maria Schopp

Continued from page 8

this honor for her continued support of the Juvenile Hall Project.

It is very important for past presidents to stay involved. We hold the history of the organization in our hearts and heads. Thanks to both Eliza and Maria for their continued commitment and service to Queen's Bench.

Re-printed with permission from Hon. Ruth S. Astle

Past President's Dinner

Continued from page 7

- Hon. Adrienne Jacobs Miller — High Tea at the Ritz Carlton
- Hon. Lee D. Baxter — Two Tickets to Smuin Christmas Ballet
- Sheppard Mullen Richter & Hampton — Gift Set from L'Occitane en Provence
- Nossaman Guthner Knox & Elliot — Ann Taylor Gift Certificate

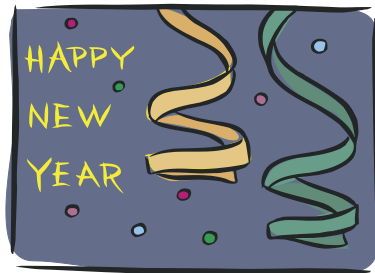
In the spirit of honoring its leaders, Queen's Bench bestows merit awards at the Past Presidents dinner. These awards are given to Queen's Bench members whose work in furthering the interests of women is above and beyond the expected and ordinary. The Queen's Bench Awards Committee Co-Chairs, the Hon. Ruth Astle and Jill Schlichtmann, presented two merit awards this year. The first was presented to Eliza Rodrigues for her outstanding dedication to the Juvenile Hall Project and work on the Nominating Committee. The second went to Maria Schopp for her continued support and commitment to Queen's Bench, in particular to the Juvenile Hall Project.

Many thanks to the event organizer Felicia Vallera and the events committee for their hard work, to Queen's Bench administrator Maurine Killough for her valuable support, to the very attentive staff of City Club for great service and impeccable cuisine, to the Queen's Bench Juvenile Hall Project committee member and the girls of Juvenile Hall for the centerpieces, and to everyone who contributed to making this a fun and inspiring evening. As in the past, the Past Presidents Dinner is a wonderful opportunity to honor the leaders and membership of Queens Bench, to highlight the important and beneficial work of the organization, and to enjoy each others company in a genial setting. The next year is sure to provide equal reason for the membership to gather once again to celebrate the accomplishments and activities of another productive year.

CALENDAR OF EVENTS

JANUARY

- 17** **Juvenile Hall Project**
Wednesday, 7:00 p.m.
Draw a Wishing Tree
Youth Guidance Center, San Francisco
- 20** **Annual QB Board of Directors Retreat**
Saturday, 9:00 a.m.
Location TBA



FEBRUARY

- 6** **QB Board of Directors Meeting**
Tuesday, 6:00 p.m.
Location TBA
- 7** **Juvenile Hall Project**
Wednesday, 7:00 p.m.
Valentine's Day Party; decorate
boxes and cards
- 21** **Juvenile Hall Project**
Wednesday, 7:00 p.m.
Decorate T-shirts



www.queensbench.org

816 E. Fourth Avenue

San Mateo, CA 94401-3317

Queen's Bench Newsletter

January 2007